

Utility building  
for McSorley & Brooks  
18705 Forlier Pass Drive

Lot 9, District Lot 83,  
Galiano Island,  
Cowichan District,  
Plan 21831

Scale: 1" = 4'

**wall framing:**

2x6x8: 24  
2x6x10: 22  
2x6x12: 8

1x4x12 strapping: 8  
4x8x1/2 fir sheathing: 5

finish: 5/8x4 clear resawn T&G: 850'  
2 pieces corrugated galv.: 38" x 8'

**beams:**

2x10x20: 4  
2x10x10: 4  
2x10x16: 2  
2x12x20 RC: 2  
2x12x12 RC: 1

6x6x8: 1  
6x6x10: 1

**roof:**

rafters: 2x6x14: 20  
strapping: 1x4x12: 28  
facia: 2x12x20 RC: 2  
facia: 2x12x12 RC: 1  
facia: 1x12x16 RC: 2

**Fir 2 & Btr:**

2x10x10: 4  
2x10x16: 2  
2x10x20: 4  
6x6x8: 1  
6x6x10: 1

**S/P/F 2 & Btr:**

2x6x8: 24  
2x6x10: 22  
2x6x12: 8  
2x6x14: 20  
1x4x12 strapping: 36

**Rough Cedar Tight Knot (finish):**

2x12x20: 4  
2x12x12: 2  
1x12x16: 2  
2x4x10: 2  
1x8x8: 3

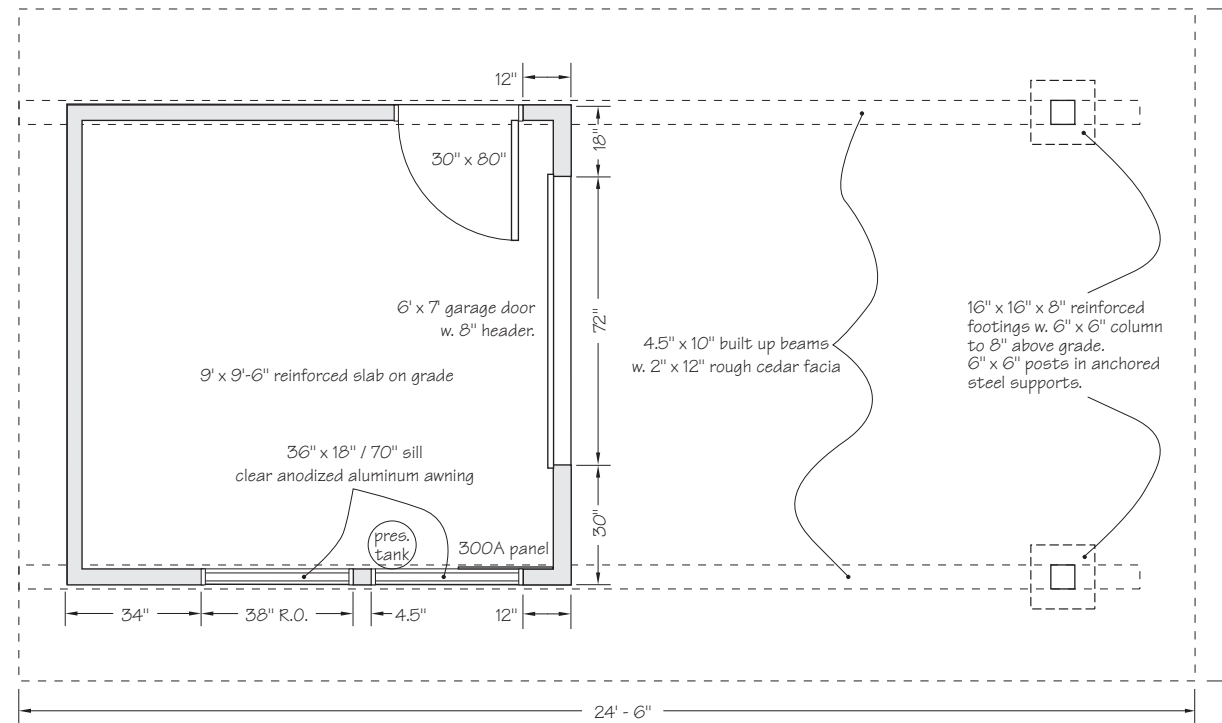
**Clear cedar resawn:**

5/8x4 T&G: 850'

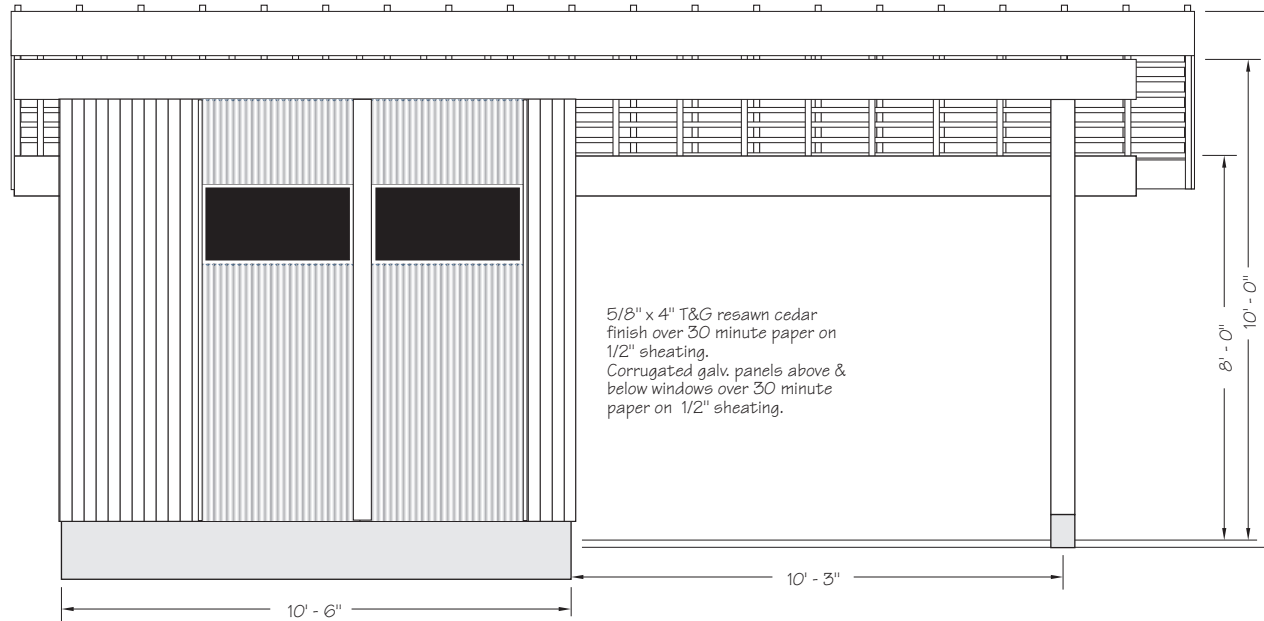
**Plywood:**

4x8x1/2 fir sheathing: 5

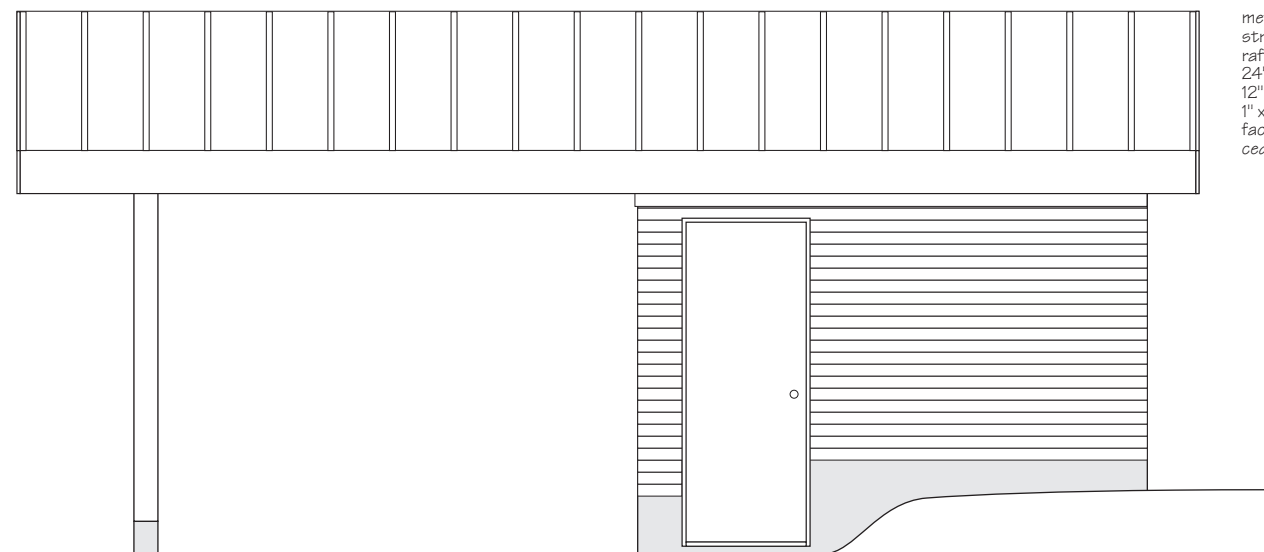
Plan View



North-East Elevation

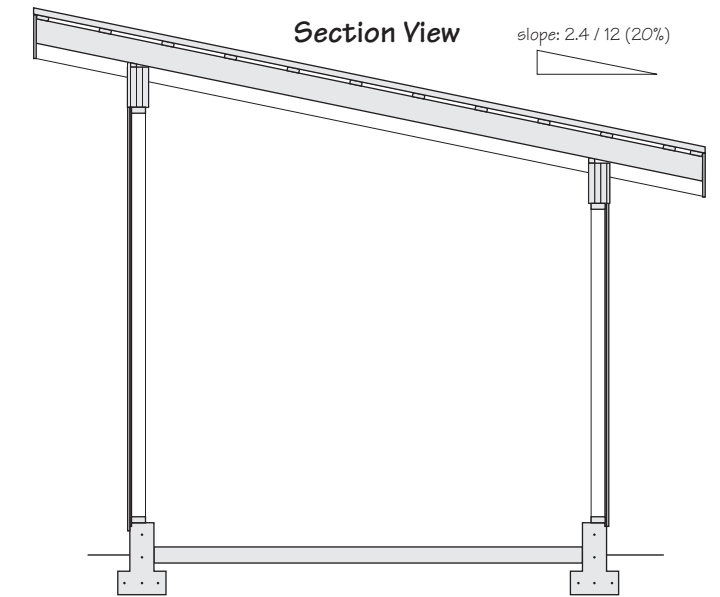


South-West Elevation



metal roof over 1" x 4" strapping on 2" x 6" rafters - both 16" O.C. 24" eaves typical except 12" eave on S.E. wall. 1" x 12" rough cedar end facia and 2" x 12" rough cedar facia.

Section View



North-West Elevation



South-East Elevation

